



# Impact Report

# 2022





Kinnect is leading the way in transforming child welfare by leveraging its expertise to challenge beliefs, values, and actions around kinship and permanency.

## Mission:

To transform beliefs, values and actions to ensure permanent families for all children in the shortest time possible.

## Vision:

Through leveraging leadership expertise, Kinnect will continue to design programs, products and services that transform Ohio's child welfare system. Kinnect will lead innovation to reduce the time that children spend in the child welfare system and to prevent entry into the child welfare system.

## Long Term

We envision a world where families, agencies, resources — and children — work together so that every child is loved and nurtured in a permanent family.

Every child has family.  
Finding them changes everything.



*"If we try, we can find family. And by try, it's more than just asking the parents who their family is. It's digging. It's doing the hard work. It's being willing to go the extra mile. It's 'if my child was sitting in this seat, how far do I want a caseworker to go to make sure they can reach me?'"*

— Bea, KTF Specialist

# Leveraging Our Expertise

Since 2019, Kinnect has grown significantly in terms of Kinnect staff as well as navigators and specialists at our partner sites. Kinnect invests in program implementation and evaluation, and also in organizational training and development.

Through training, Kinnect has reached

**550** child welfare professionals  
**77** learning sessions

## Feedback:

70% said the content was new to them and

99% believed it would improve their practice.

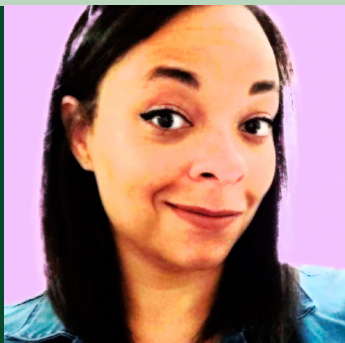
92% were confident they could apply what they learned

95% would recommend it to others

## Impact & Expanding Reach

Kinnect staff also presented **13** workshops at **7** regional and national conferences

Financials	2019	2020	2021	2022
	16 Employees	45 Employees	55 Employees	60 Employees
	20 Navigators and Specialists	41 Navigators and Specialists	64 Navigators and Specialists	72 Navigators and Specialists
Fundraising	\$162,832	\$103,012	\$115,261	\$155,410
Implementation of Programs and Services	\$1,269,767	\$1,420,249	\$2,905,621	\$4,233,958
Evaluation	\$325,432	\$1,281,983	\$1,381,896	\$1,218,961
Marketing and Communication	\$22,970	\$639,222	\$949,116	\$1,205,902
Training and Development	\$86,504	\$52,076	\$252,074	\$512,547



*"There is someone in every family for every child. We truly believe that. It drives us to do good work. It drives us to find people."*

— Tionna, KTF Supervisor





Kinnect to Family (KTF) specialists work alongside traditional caseworkers to identify and engage kin who can care for children, and then create a support plan with them.

## Results

**Youth served by KTF were almost 2.5 times more likely to be placed with family members than youth not served by KTF**

While in out-of-home care, youth spent significantly more time with kin than youth not served by KTF

**2,170** KTF youth served

KTF connections found:  
**164,501**

When a child is served by KTF, they are out of foster care and back to family within

**45 days**



*"Every child has family out there, and it's my job to find that family by making connections with aunts and uncles and grandparents and second cousins. We just keep searching diligently for these children"*

— Mary Lee, KTF Specialist



OhioKAN is a statewide Kinship and Adoption Navigator Program. Families can connect one-on-one with a navigator by phone, email, or text. Kinnect sought out the opportunity to design and implement OhioKAN to support families like the ones we were already serving through Kinnect to Family.

# 12,500+

Family inquiries across phone and web

OhioKAN has directly served more than

## 4,000

families with more than

## 15,000

family members

# 85%

of families served by OhioKAN had no prior kinship or adoptive services through the state

On average, OhioKAN families receive direct, personalized referrals to more than

# 10 resources

SUCH AS:

**Food and Shelter**  
**Child Care**  
**Health Care**  
**Legal Services**



Grandparents represent 51% of the families serviced by OhioKAN and we are excited to also serve aunts, uncles, cousins and families created by adoption.



*"Staying with kin helps children stay within their culture, within their belief and value system, and with people that love them unconditionally."*

— Nancy, KTF Supervisor





# Youth-Centered PERMANENCY ROUNDTABLES

Youth Centered Permanency Roundtables put youth at the center of a series of important meetings with the goal of leaving foster care for a permanent home.

YCPRT is part of Kinnect's mission to develop partnerships that transform beliefs, values, and actions to achieve permanency for all children in the foster care system in the shortest time possible.

In 2022, Kinnect launched a new Statewide Facilitator model through which certain counties can work with a Kinnect facilitator who plans and executes the meetings. The Statewide Facilitator model allows smaller counties to participate in this innovation without hiring additional staff, which is especially important during the current workforce crisis.

## RESULTS

Youth served by YCPRT are more likely to achieve permanency (through reunification, adoption, or kinship) than age out of foster care.

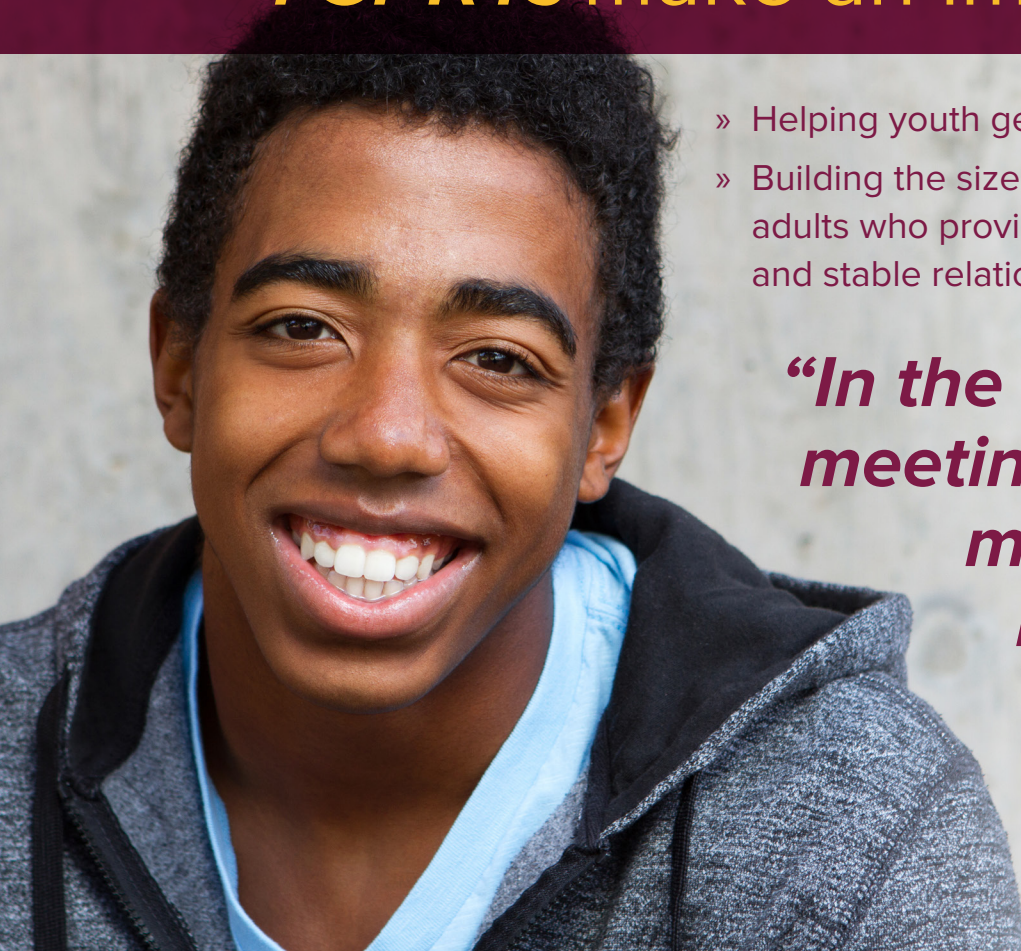
Overall, youth who participate in YCPRT see an increase in their permanency ratings for relational and legal permanency.

A higher frequency of YCPRT meetings may be related to a higher likelihood of achieving permanency.

## YCPRTs make an impact by...

- » Helping youth get the lifelong support they need
- » Building the size and strength of a network of adults who provide youth with loving, supportive and stable relationships

***“In the round table meetings, I feel that my voice is heard and I feel like it has power.”***



# YOUTH NAVIGATOR NETWORK

Providing youth and young adults with resources, connections, and an expanded network of support statewide.

Youth Navigator Network helps Ohio's youth and young adults who have been in foster care or recently transitioned out of care navigate systems, access resources, and build an expanded network of support.

YNN believes in youth. YNN partners with navigator sites to support youth in their communities. The Young Adult Advisory Council, which includes young people with lived experience in the child welfare system, has been integral in designing the program.

*The Youth Navigator Network can provide 1 on 1 support to talk directly with youth about challenges they may be facing in the following areas:*

**FOOD & SHELTER**

**HEALTH & WELLBEING**

**HOUSING ACCESS**

**FAMILY & RELATIONS**

**JOB & CAREER COUNSELING**

**LEGAL & FINANCIAL ASSISTANCE**

**COMPLETING FORMS & VOUCHERS**

**SCHOOL & EDUCATION**

**PARENTING & CHILDCARE COACHING**







## Key Staff

**Shannon Deinhart**  
Executive Director & Co-Founder  
Kinnect

**Jane Doherty**  
Office Coordinator  
Kinnect

**Cass Freeland**  
Marketing and Communications  
Manager  
Kinnect

**Stephanie Bealeal**  
Program Director  
Kinnect to Family

**Julia Donovan**  
Statewide Program Director  
OhioKAN

## Board of Directors

**Grant Keating**  
President  
Partner, Dworken & Bernstein

**Kimberly Bell**  
Vice President  
Director of Compliance, Youth  
Opportunities Unlimited

**Megan Fellingner**  
Treasurer  
President & CEO, Morrison Products, Inc.

**Rick Amburgey**  
Secretary  
Associate, Walter Haverfield

**Susan Whittaker Hughes**  
Partner, Employee Benefits Practice, Baker  
& Hostetler LLP

**Julia Hornack**  
Senior Vice President, Strategic Advisory  
at Guy Carpenter

**Jonathon Henry, MSSA, LSW**  
Social Worker, U.S. Veterans Administration

**Arlene Towarnicke**  
Principal, RSM US LLP, Valuation Services

**David Boone Jr.**  
Founder and CEO of BlendEd

**Amy Kilbane**  
Senior Communications Manager, KeyBank

**Denise Coats**  
Senior Human Resources Business Partner,  
Remedi SeniorCare Pharmacy

**Ron Pollock**  
Senior Vice President of Operations, Vox  
Mobile

## Support Our Mission

All children deserve to remain connected to their culture, community, and kin.

Follow us:



[www.kinnect.org](http://www.kinnect.org)  
216.692.1161



Support  
our work:



Subscribe to our  
monthly newsletter:

